

DSM

CONTRACT
LIFTING
SERVICES



SPX650
MINI CRANE

TECHNICAL INFORMATION

JEKKO SPX650



The Jekko SPX650 has a maximum lifting capacity of 5 tonnes and embodies all the latest major innovations and implements many state-of-the-art technical solutions engineered by Jekko.

The SPX650 is designed as an electric machine right from the start, and features highly refined hydraulics, which can be appreciated in the precision of its movements.



SPX650 KEY FEATURES

- **X-PATTERN OUTRIGGERS** - With double extension & endless operating configurations.
- **EXTENDABLE TRACKS** - To enhance crane stability.
- **1.2T HYDRAULIC JIB** - 1.2T hydraulic jib with rest position under the main boom.
- **AUTOMATIC POWER MODALITY** - According to the lifted load it adjusts speed, maximum supplied power & engine performance.
- **J-CONNECT** - Software developed by Jekko to improve remote service assistance & to have a general overview of the crane thanks to a real-time connection with the machine.
- **ADDITIONAL ELECTRIC ENGINE** - The possibility of working indoors silently and without any emissions.
- **2T RUNNER JIB** - Stored on board.
- **ROTATION WITHIN THE REDUCED STABILISATION AREA** - 2900x2900mm.
- **MULTIPLE STABILITY AREAS** - Intuitively displayed on the remote control's screen.

SPECIFICATIONS

SPX650

SPX650

DIMENSIONS 4460 X 980 X 2020 MM

STABILIZATION AREA 4500 X 4500 MM

WEIGHT

CRANE 5700KG

JIB	JIB1200.2H1MLX	480KG
	JIB2000GX	50KG

MANIPULATOR	MV600.E	200KG
-------------	---------	-------

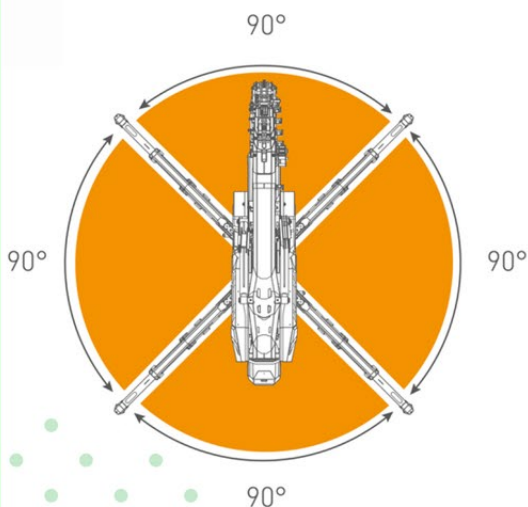
LITHIUM BATTERY PACK 48 V - 400 AH

MAIN WINCH 800KG 60 M - Ø 7 MM

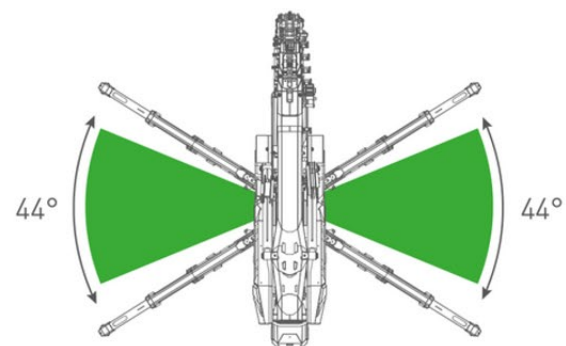
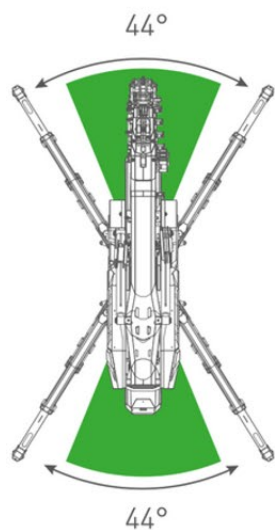
GRADEABILITY 20° (36%)

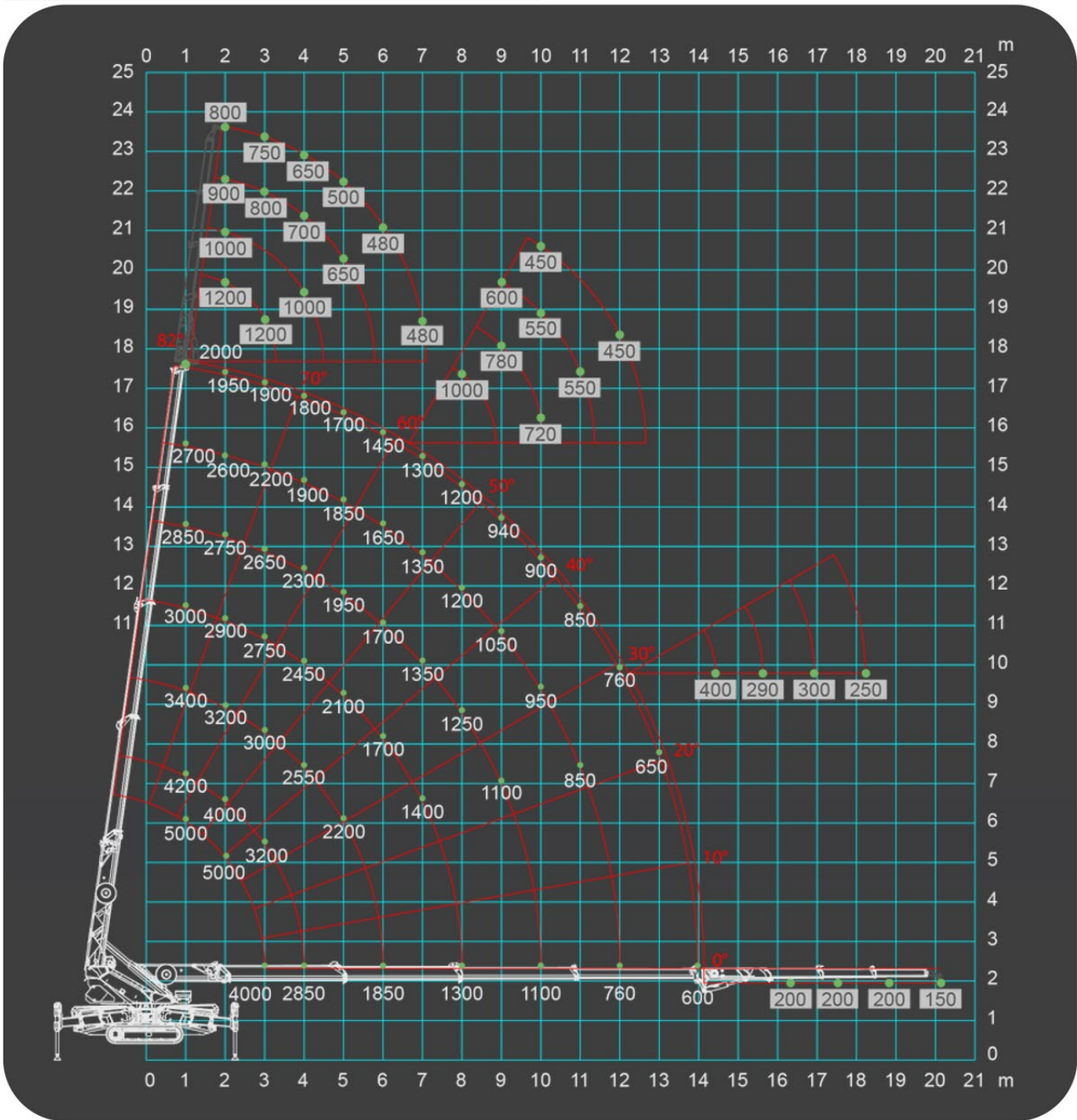
EXTENDABLE TRACKS 980-1380 MM

STANDARD CONDITIONS WITH
360 CONTINUOUS ROTATION

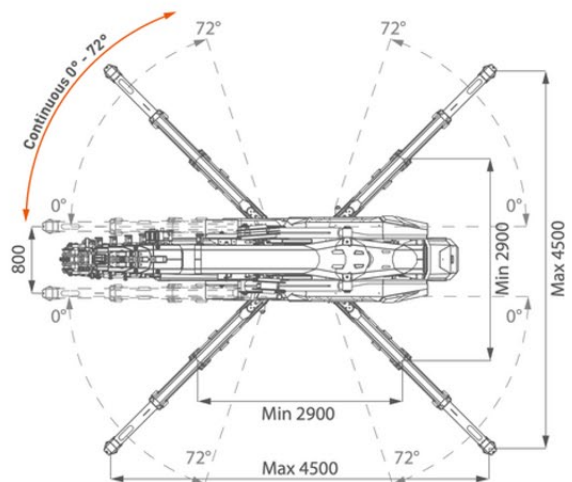
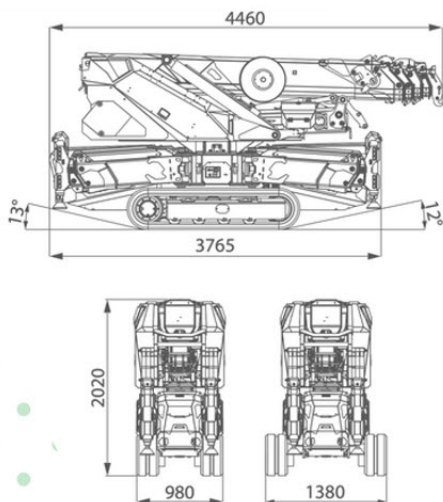


EXTRA PERFORMANCE IN REDUCED FOOTPRINT





DIMENSIONS & FOOTPRINT

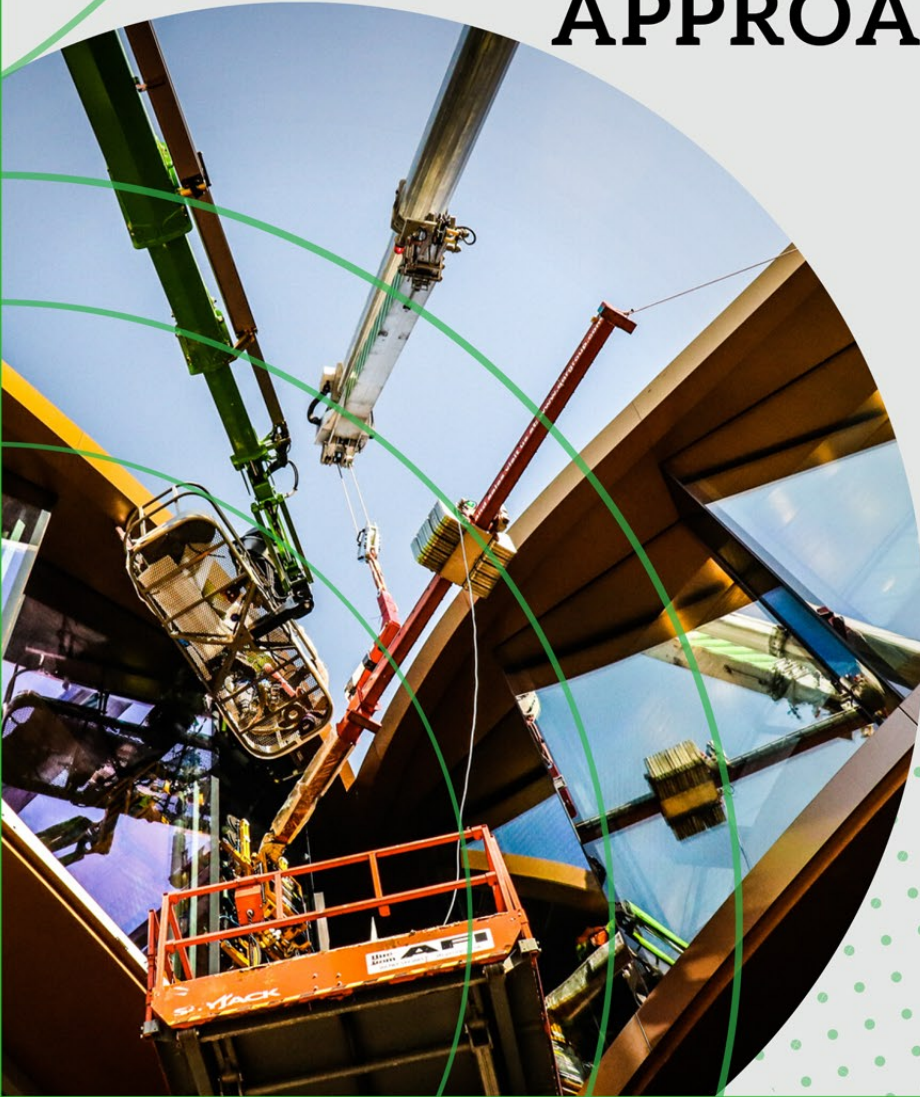




“

**IT'S CONTRACT
LIFTING, WITH
A PROJECT
APPROACH**

”



The Old Rectory, Church Road, Bowers Gifford, Basildon. SS13 2HG

0203 948 9659

contracts@dsmcls.co.uk

www.dsmcls.com