

DSM

CONTRACT
LIFTING
SERVICES



**Böcker AK 52
Truck Crane**

TECHNICAL INFORMATION

BÖCKER AK 52 TRUCK CRANE

With a maximum load of up to 12 tonnes, the Böcker AK 52 crane provides customers with a strong combination of performance, enormous working ranges and fantastic efficiency. This is the most powerful crane in the Böcker Range and can often make easy work of jobs which were previously reserved for much larger all-terrain cranes, more often than not they will need an additional jib extension and offset to come close!

The crane can be rigged with each outrigger set at an infinite variety of lengths giving the end-user great flexibility in rigging situations on-site. The minimal tail swing allows the crane to rig and work in previously impossible situations.

This type of machine offers very low outrigger loadings in comparison with conventional all-terrain and truck-mounted cranes with comparable boom lengths.

The operator can always have the best vantage point to safely operate the crane due to the flexibility of the fact it is operated remotely, by remote control which can minimise the risk of blind lifting operations.



This crane will lift a maximum load of 12 tonnes with a 5m radius and an impressive maximum radius of 45 meters with 100 kg or 34 m with 1,000 kg load. The Böcker 52 is equally impressive with an extremely large working area.

SPECIFICATIONS

Böcker AK 52

| | |
|------------------------------------|-----------------------|
| Payload max. (kg) | 12,000 |
| Extension length max. (m) | 55m |
| Mechanical extension length | 38.00 |
| Jib extendible (m) | 6.3 / 10.3 / 14.3 |
| Jib payload (kg) | 3,000 / 2,000 / 1,000 |
| Main boom angle (degrees) | 85 |
| Swivel range (degrees) | +/- 310 |
| Jib angle approx. (degrees) | 157 |
| Lifting speed (m/min) | 50 |
| Support area L x W max. (m) | 6.89 x 6.4 |
| Support area L x W to one side (m) | 4.73 |
| Standard Outrigger Pads | 800mm x 800mm |



The Old Rectory, Church Road, Bowers Gifford, Basildon. SS13 2HG

0203 948 9659

contracts@dsmcls.co.uk

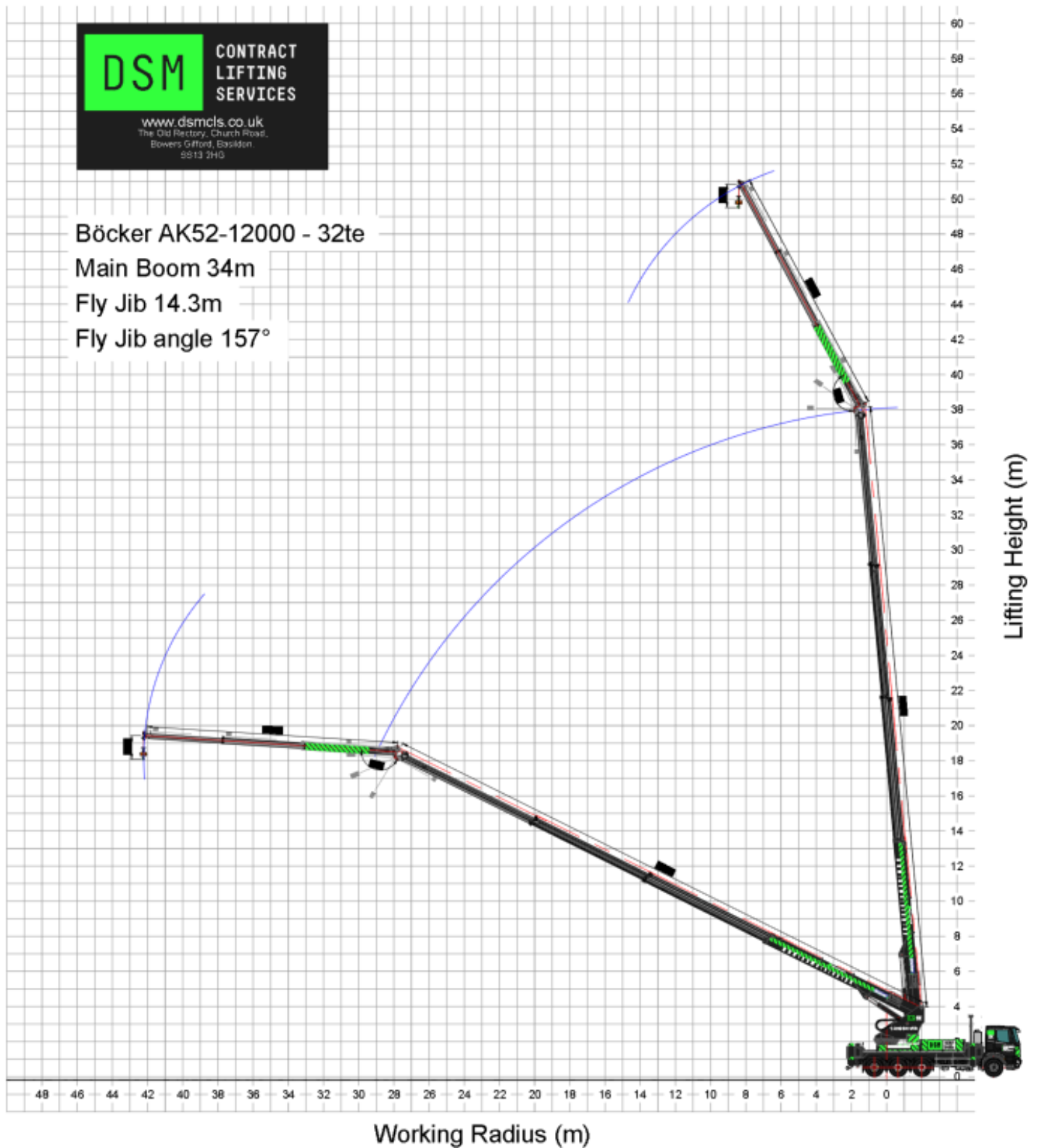
www.dsmcls.com

WORKING RANGE

Böcker AK 52



Böcker AK52-12000 - 32te
Main Boom 34m
Fly Jib 14.3m
Fly Jib angle 157°



The Old Rectory, Church Road, Bowers Gifford, Basildon. SS13 2HG

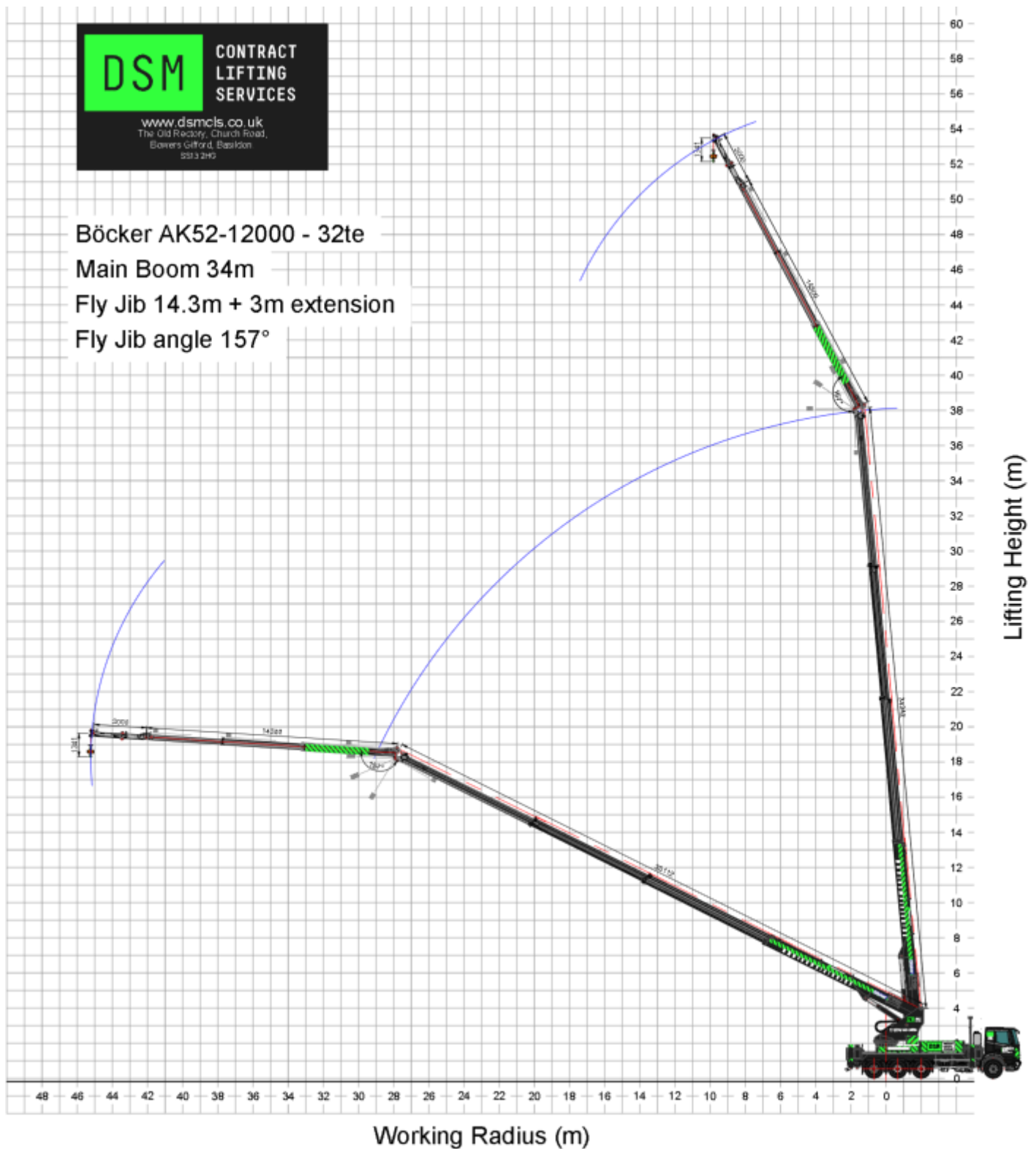
0203 948 9659

contracts@dsmcls.co.uk

www.dsmcls.com

WORKING RANGE

Böcker AK 52



The Old Rectory, Church Road, Bowers Gifford, Basildon. SS13 2HG

0203 948 9659

contracts@dsmcls.co.uk

www.dsmcls.com

WORKING RANGE

Böcker AK 52

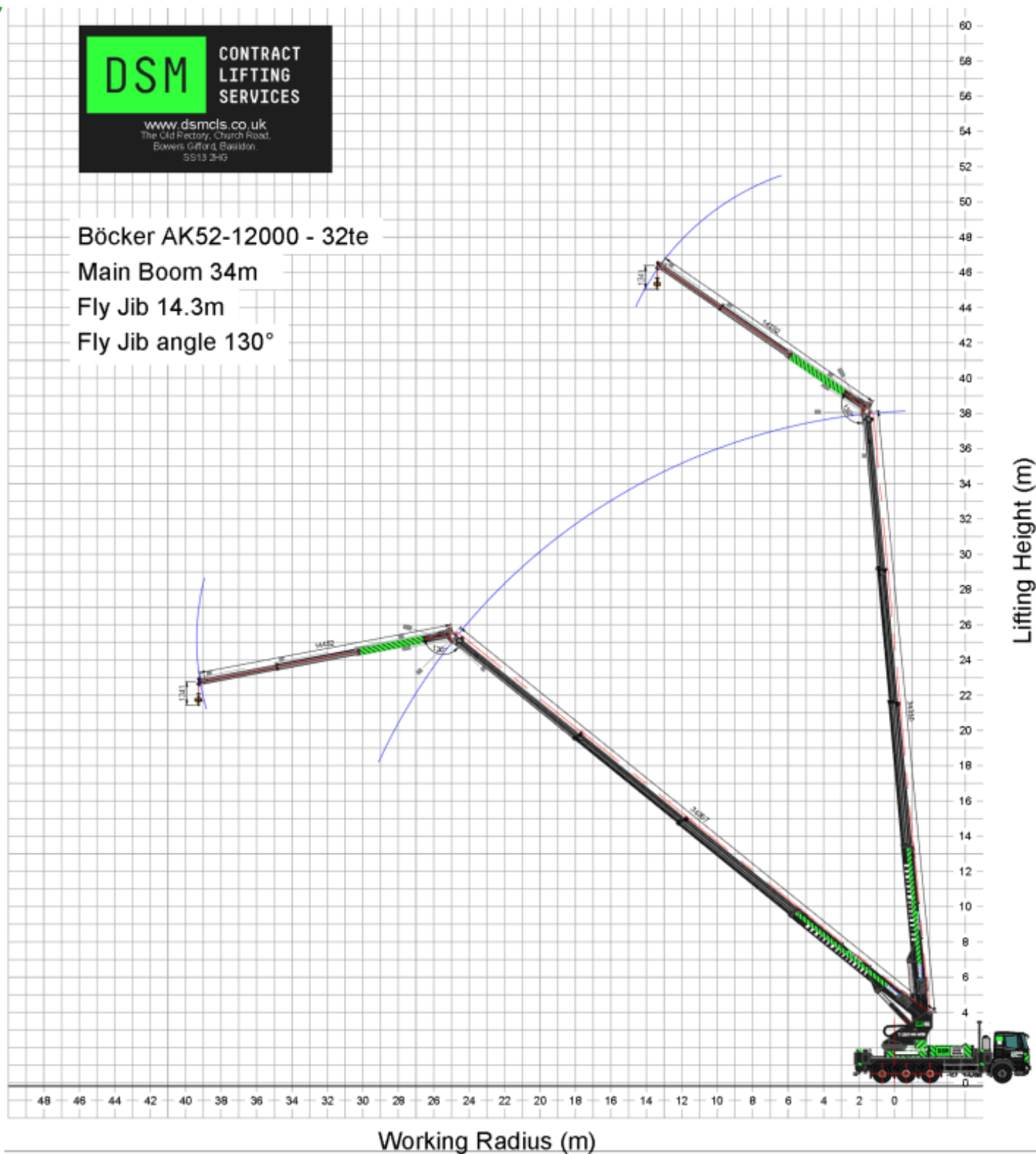


Böcker AK52-12000 - 32te

Main Boom 34m

Fly Jib 14.3m

Fly Jib angle 130°



The Old Rectory, Church Road, Bowers Gifford, Basildon. SS13 2HG

0203 948 9659

contracts@dsmcls.co.uk

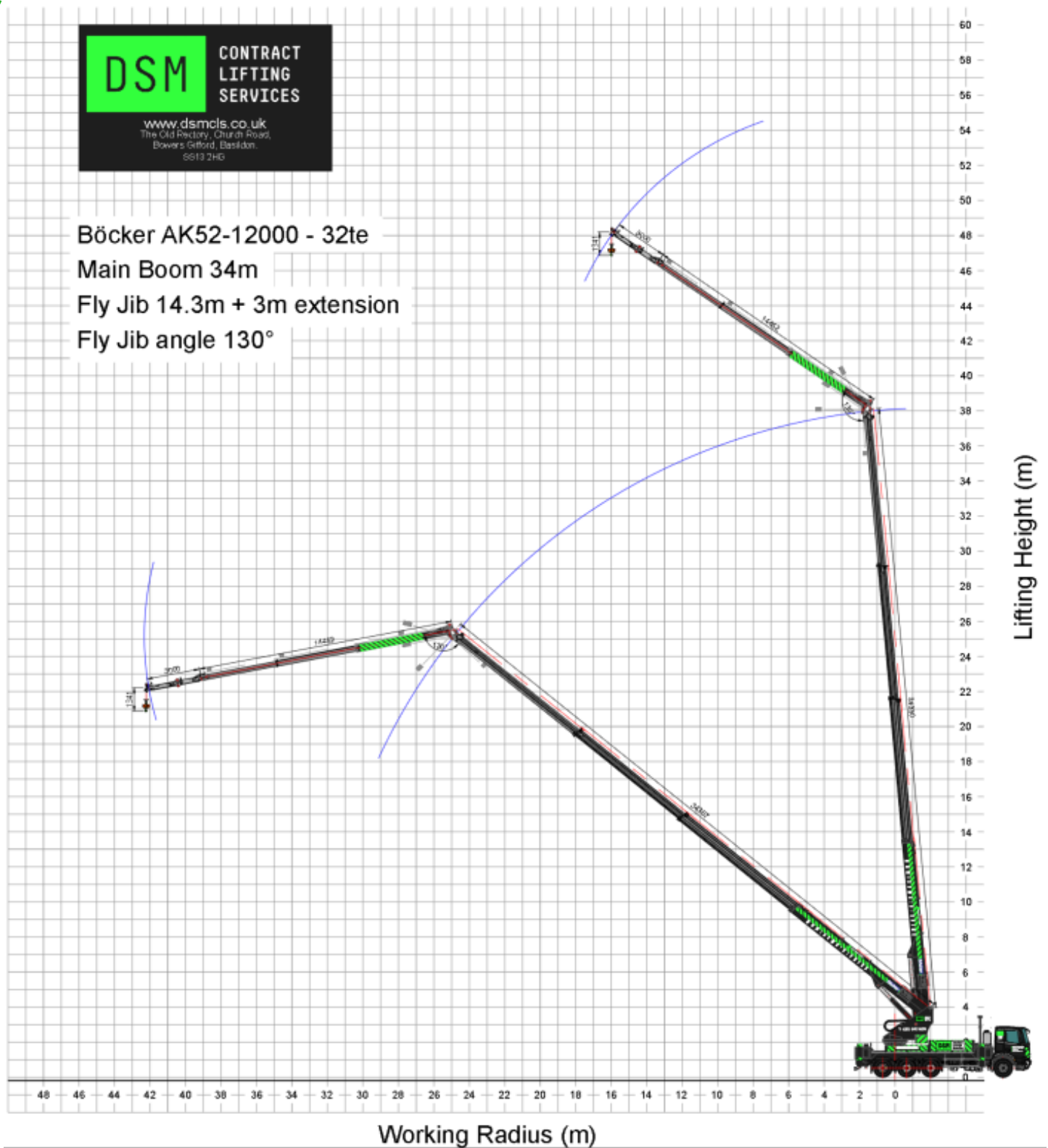
www.dsmcls.com

WORKING RANGE

Böcker AK 52



Böcker AK52-12000 - 32te
Main Boom 34m
Fly Jib 14.3m + 3m extension
Fly Jib angle 130°



The Old Rectory, Church Road, Bowers Gifford, Basildon. SS13 2HG

0203 948 9659

contracts@dsmcls.co.uk

www.dsmcls.com

WORKING RANGE

Böcker AK 52

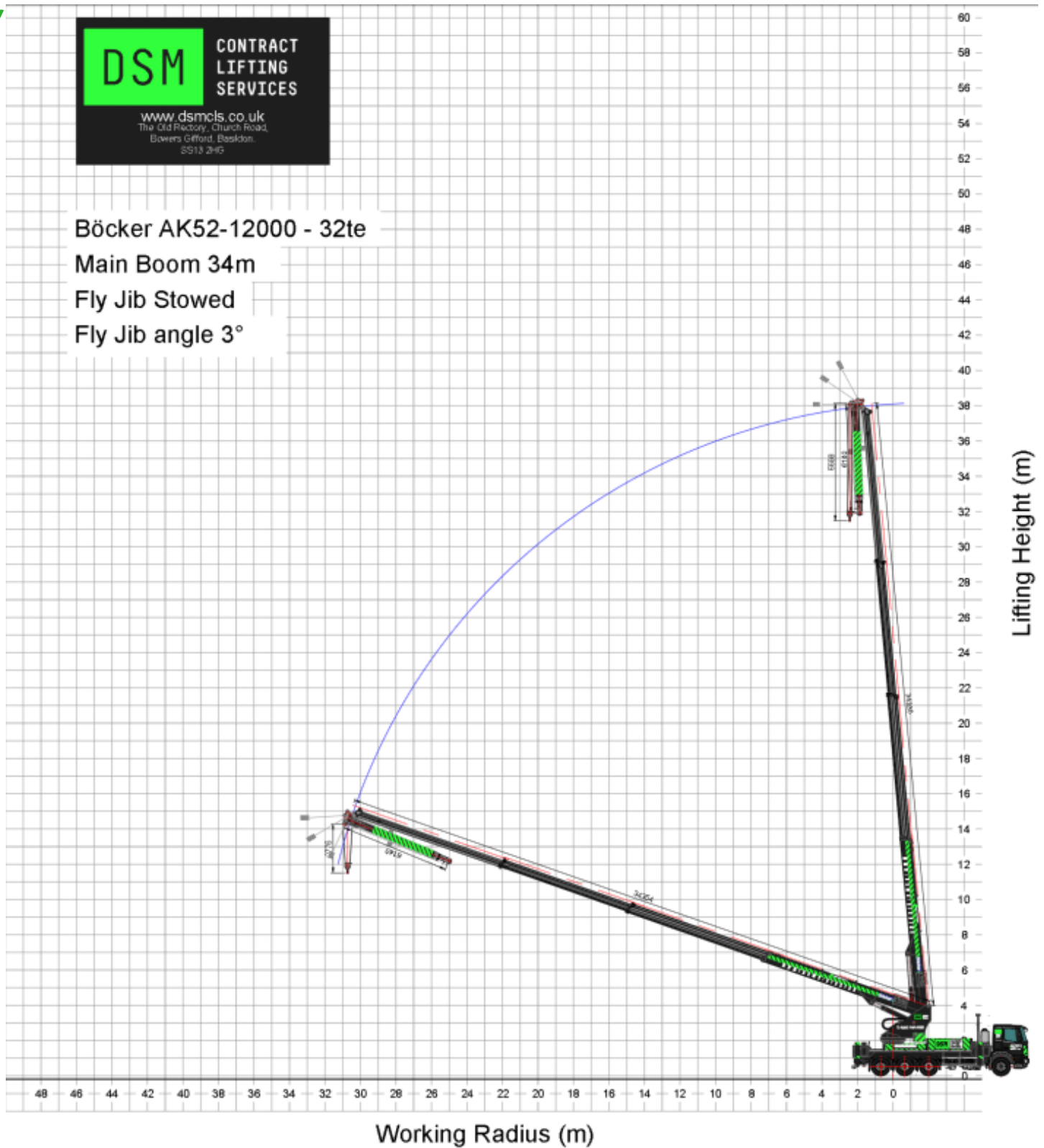


Böcker AK52-12000 - 32te

Main Boom 34m

Fly Jib Stowed

Fly Jib angle 3°



The Old Rectory, Church Road, Bowers Gifford, Basildon. SS13 2HG

0203 948 9659

contracts@dsmcls.co.uk

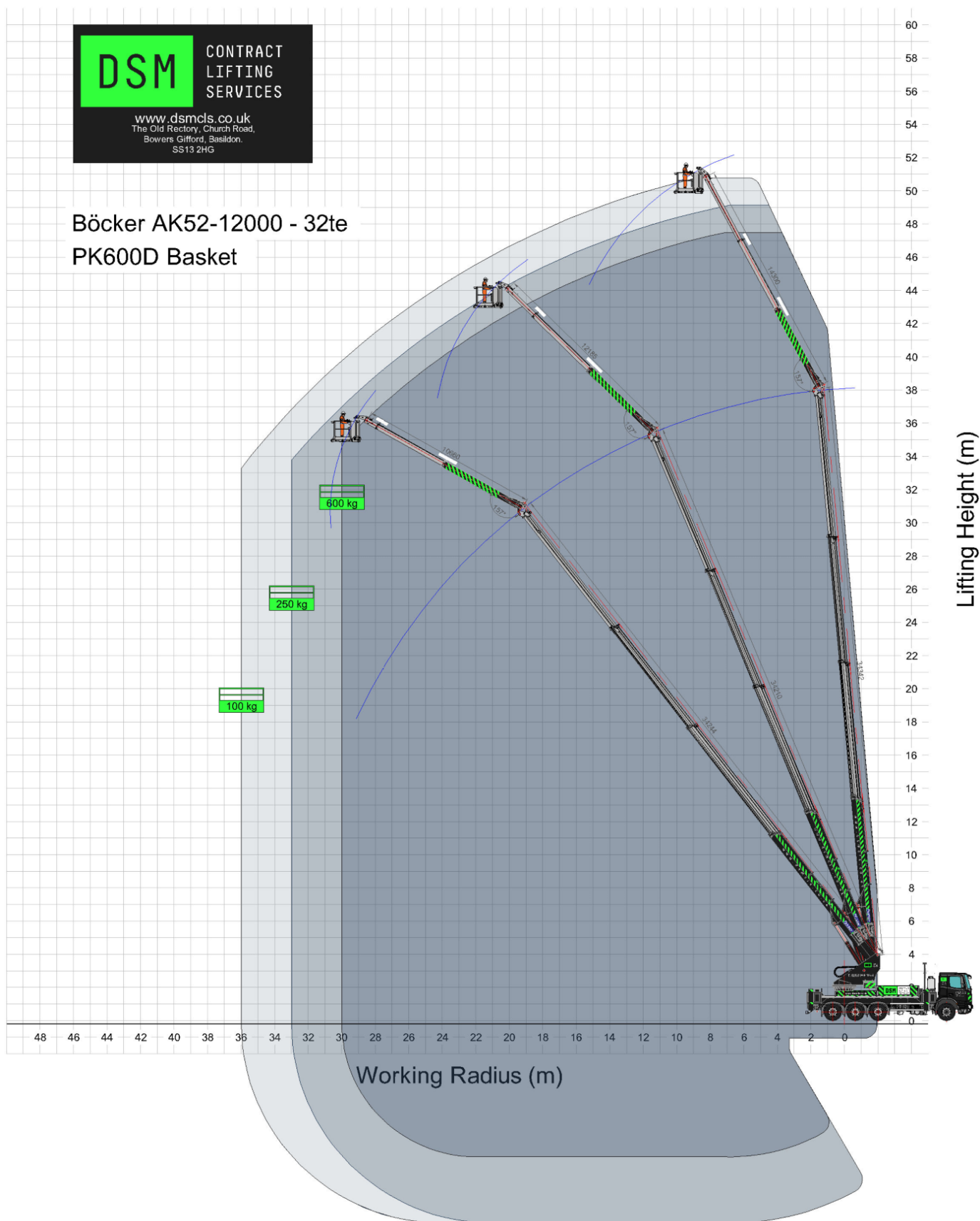
www.dsmcls.com

WORKING RANGE

Böcker AK 52

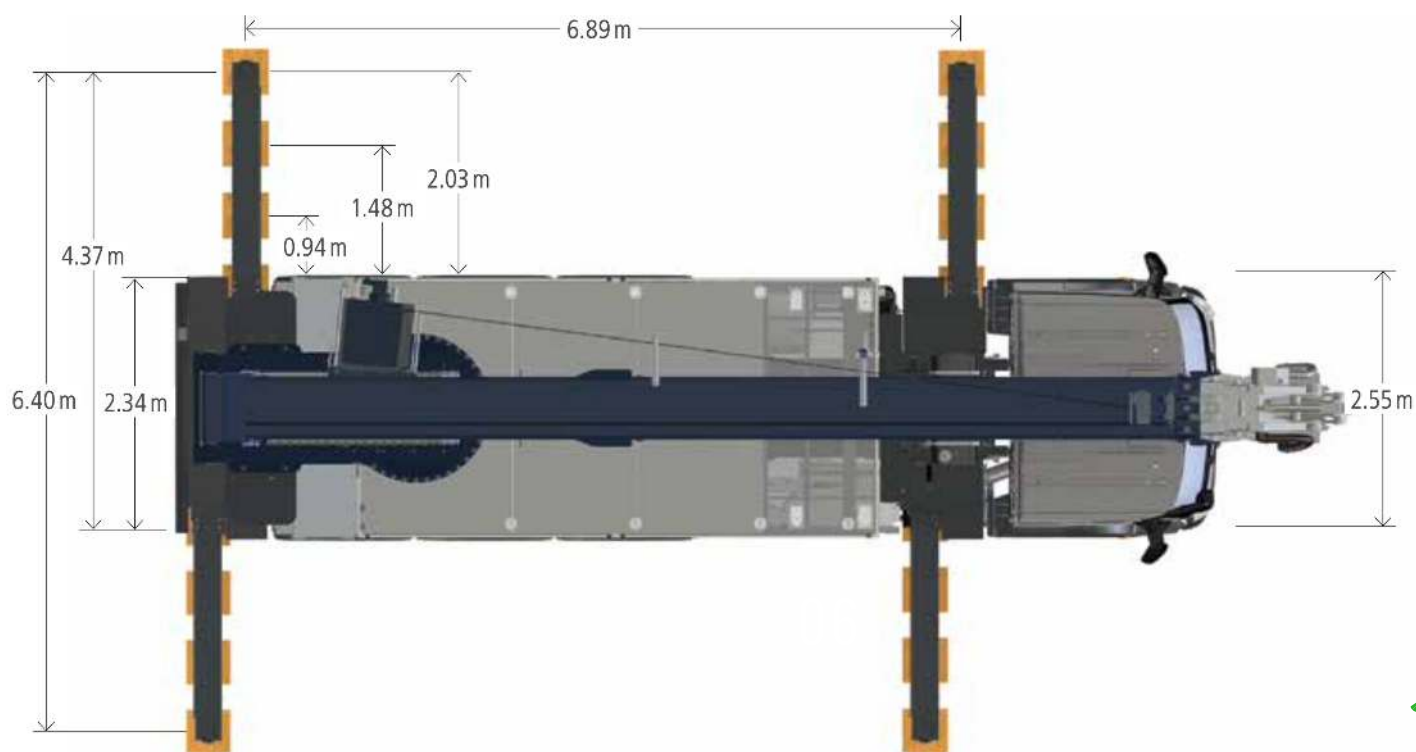
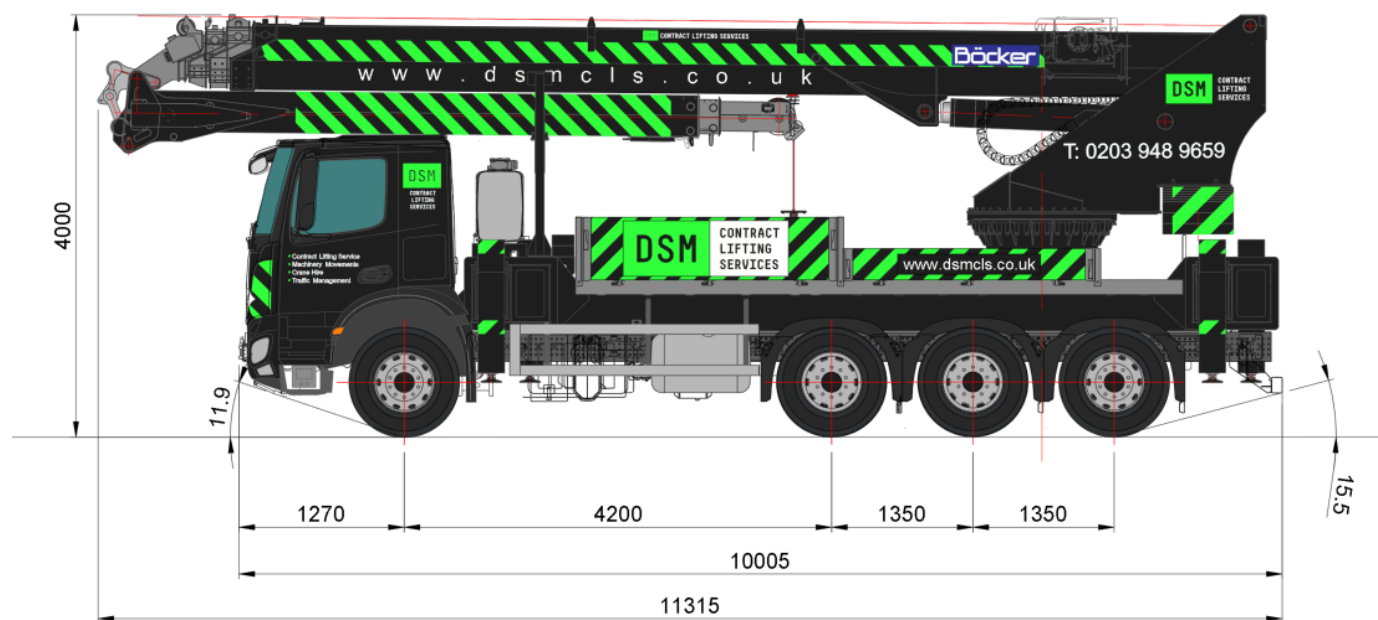


Böcker AK52-12000 - 32te
PK600D Basket



DIMENSIONS

Böcker AK 52

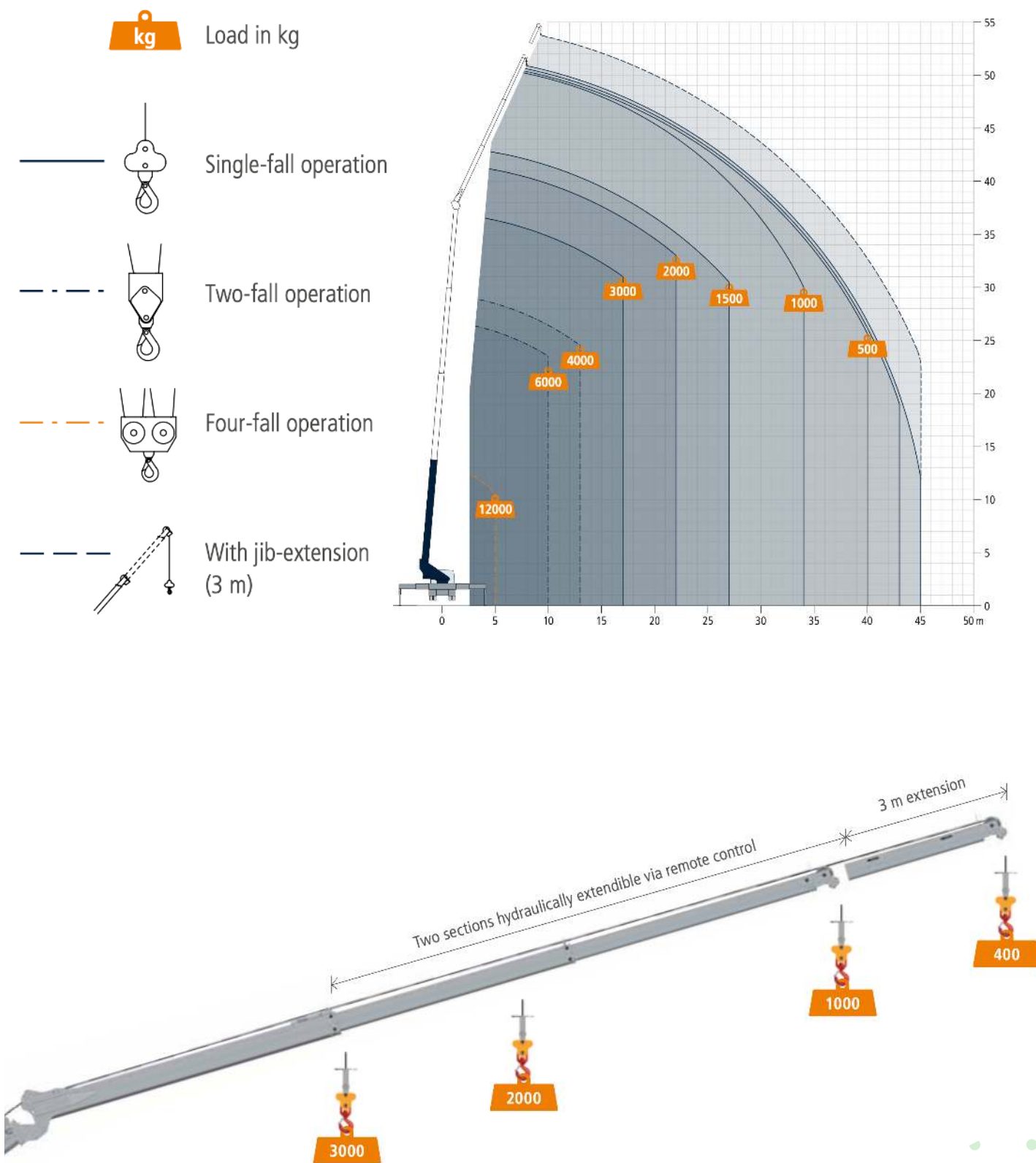


The Old Rectory, Church Road, Bowers Gifford, Basildon. SS13 2HG

0203 948 9659

contracts@dsmcls.co.uk

www.dsmcls.com





“

**IT'S CONTRACT
LIFTING, WITH
A PROJECT
APPROACH**

”



The Old Rectory, Church Road, Bowers Gifford, Basildon. SS13 2HG

0203 948 9659

contracts@dsmcls.co.uk

www.dsmcls.com