

DSM CONTRACT LIFTING PRESENTS

102T

TANDEM LIFT HAMMERSMITH



DEC 2022 | 7AM | LONDON

DSM

CONTRACT
LIFTING
SERVICES

WWW.DSMCLS.CO.UK



To successfully complete a client contract lift in challenging situations, a thorough plan, skilled team and the correct machinery is crucial. Planning includes assessing the lift location, right down to the weather conditions and other potential hazards. The team should be trained, equipped, and prepared for emergency situations. Effective communication and coordination is key during any lift. A seasoned professional leading a skilled and well equipped team is essential for the success of such an epic task.

DEC 2022 | 7AM | LONDON

DSM were approached by a customer for assistance in a complex lifting situation involving 3 steel trusses that needed to be lifted from their storage position on the ground up and onto the building and attached to previously installed Mega Columns. Due to limited space and other site constraints, it was determined that a dual lifting operation was the only way to safely lift the trusses into position. The AP explained to the client and Principle Contractor that dual lifting is safe if it is planned correctly and all design and complexities are ironed out beforehand. A full 3D concept study was completed and a dialogue was opened to progress the job forward.

The trusses were to be treated as separate projects due to the requirement of different crane locations for each lift, and the addition of dual lifting added complexity to the lift.



SUPERVISION & APPROACH

With the rising sun came the dawn of a new day, and with it the determination of our team to conquer the challenge before us.

The West Truss Lift, a task that would test the limits of our skills and experience. But we were not alone in this endeavor, for we had our Technical Manager Marcus O'Dell and our Senior Lift Supervisor Steve Torrens, leading the charge.

With precision and purpose, we meticulously planned every step of the operation, from the sequence of crane banking to the identification of operators. Steve, ever vigilant, stationed himself at key points throughout the lift following the pre agreed plan set out in the mornings pre lift meeting, ready to guide and direct the entire lift.

But we knew that no plan no matter how detailed is foolproof, and so we had spotters in separate vantage points, all connected through radio communication to Steve, ready to feedback any observations.

And so, with Steve's expert banking skills and our team's unwavering determination, we set out to lift the West Truss.

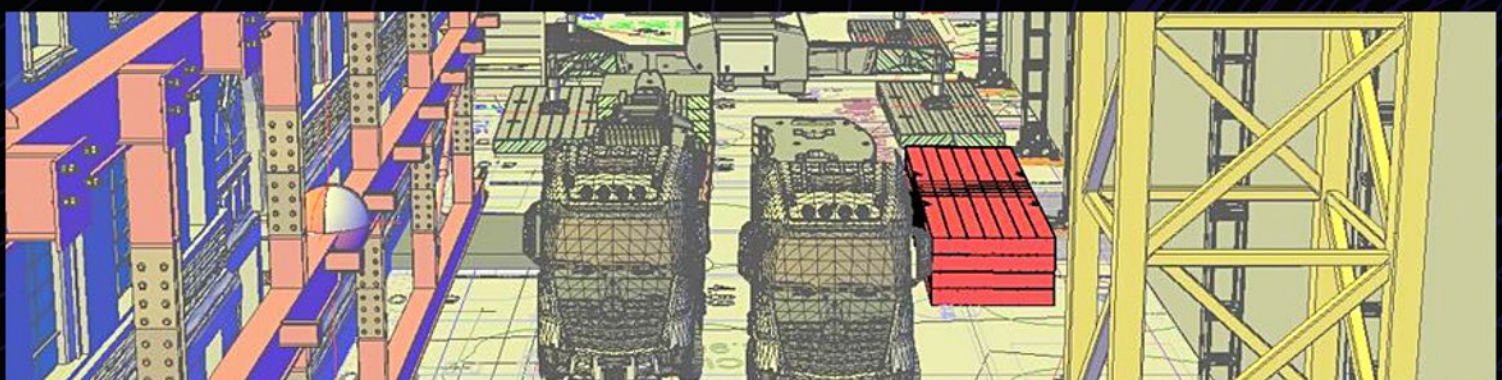
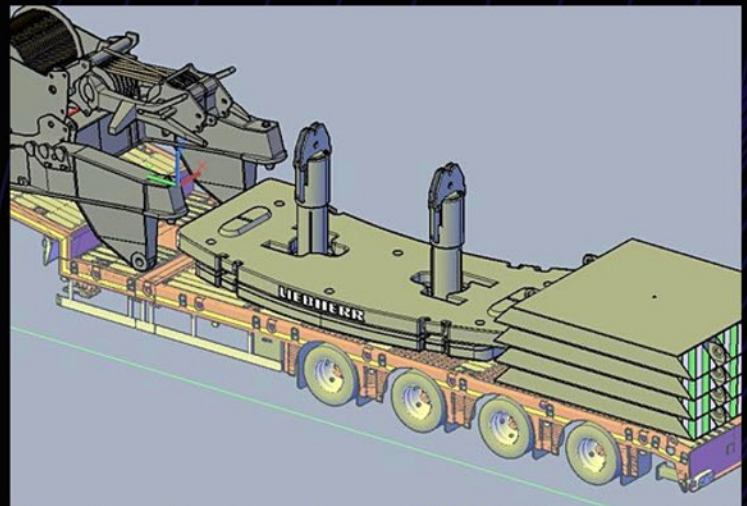
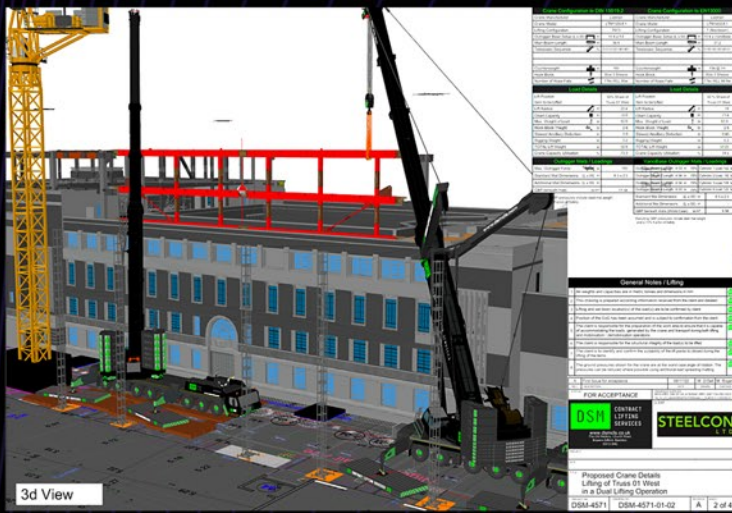
And lift it we did, with the grace and efficiency of a well-oiled machine.

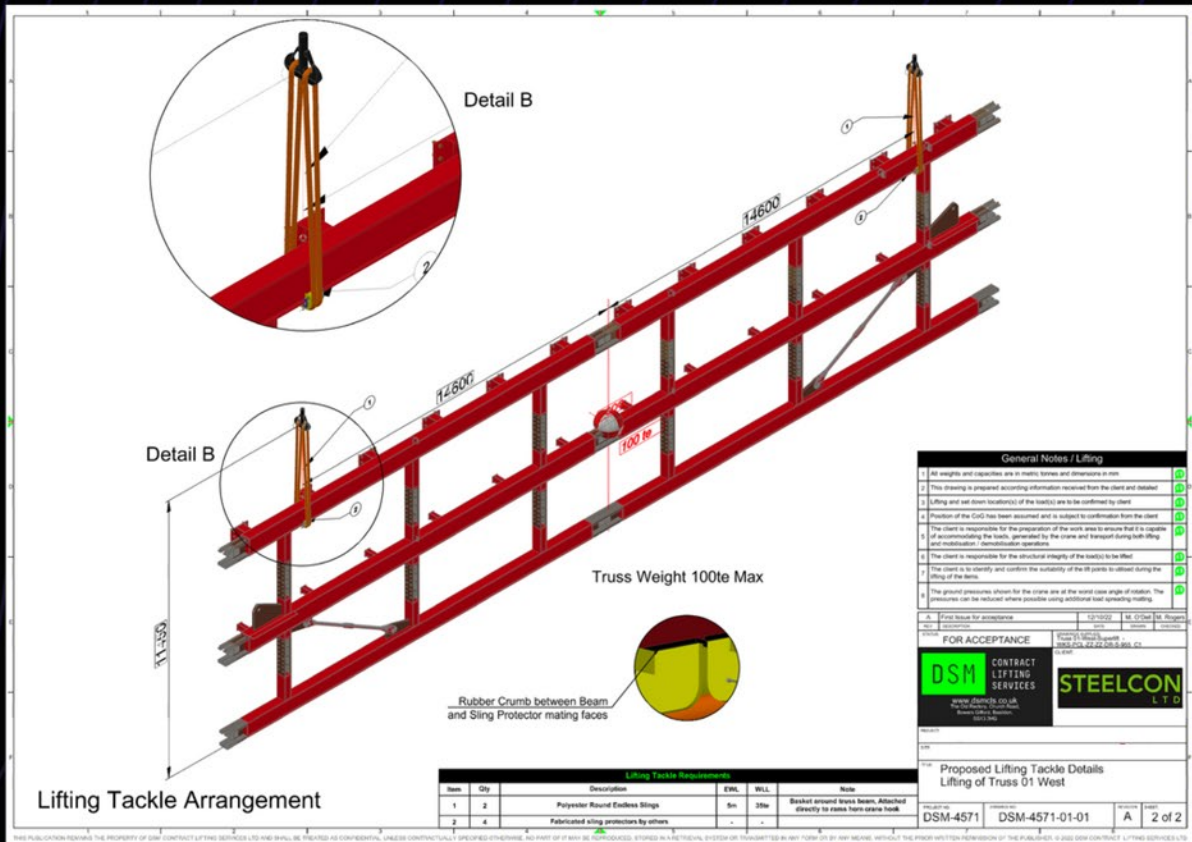
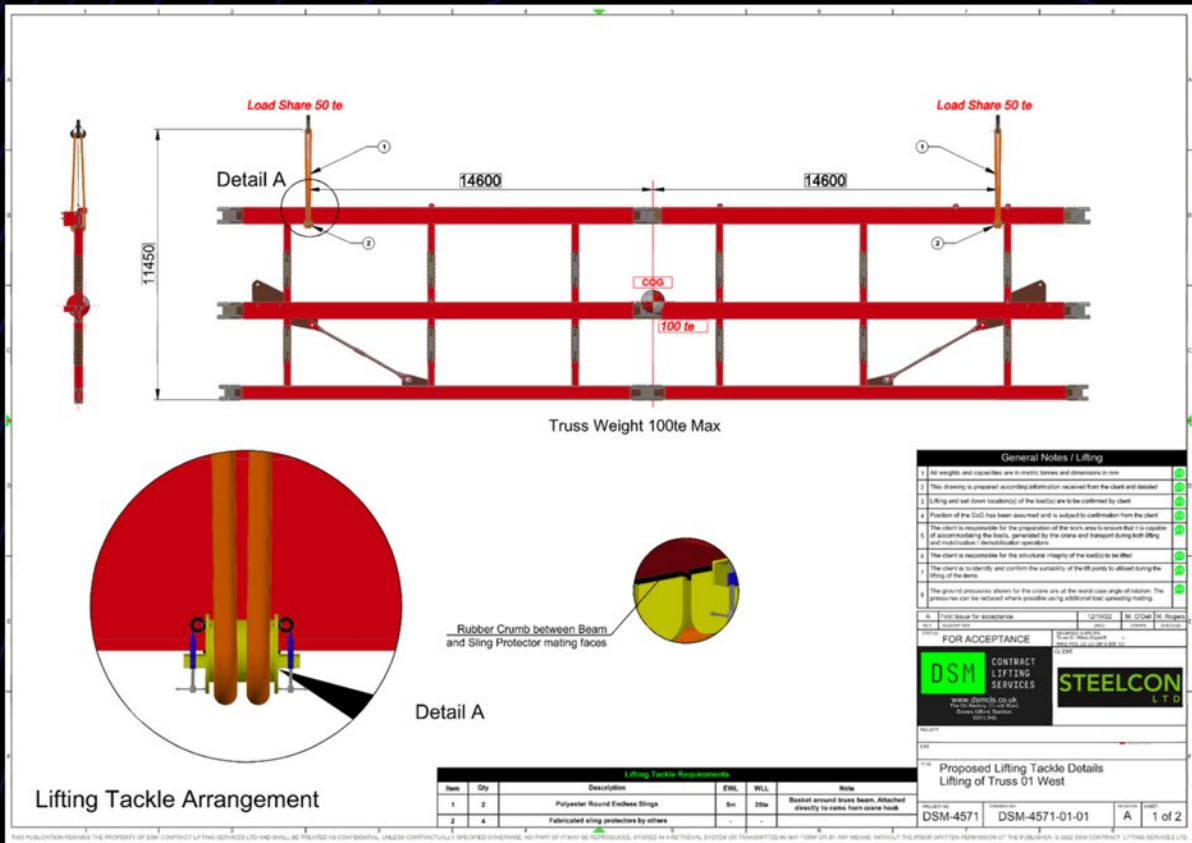
It was a victory for our team, a testament to our experience and skill.

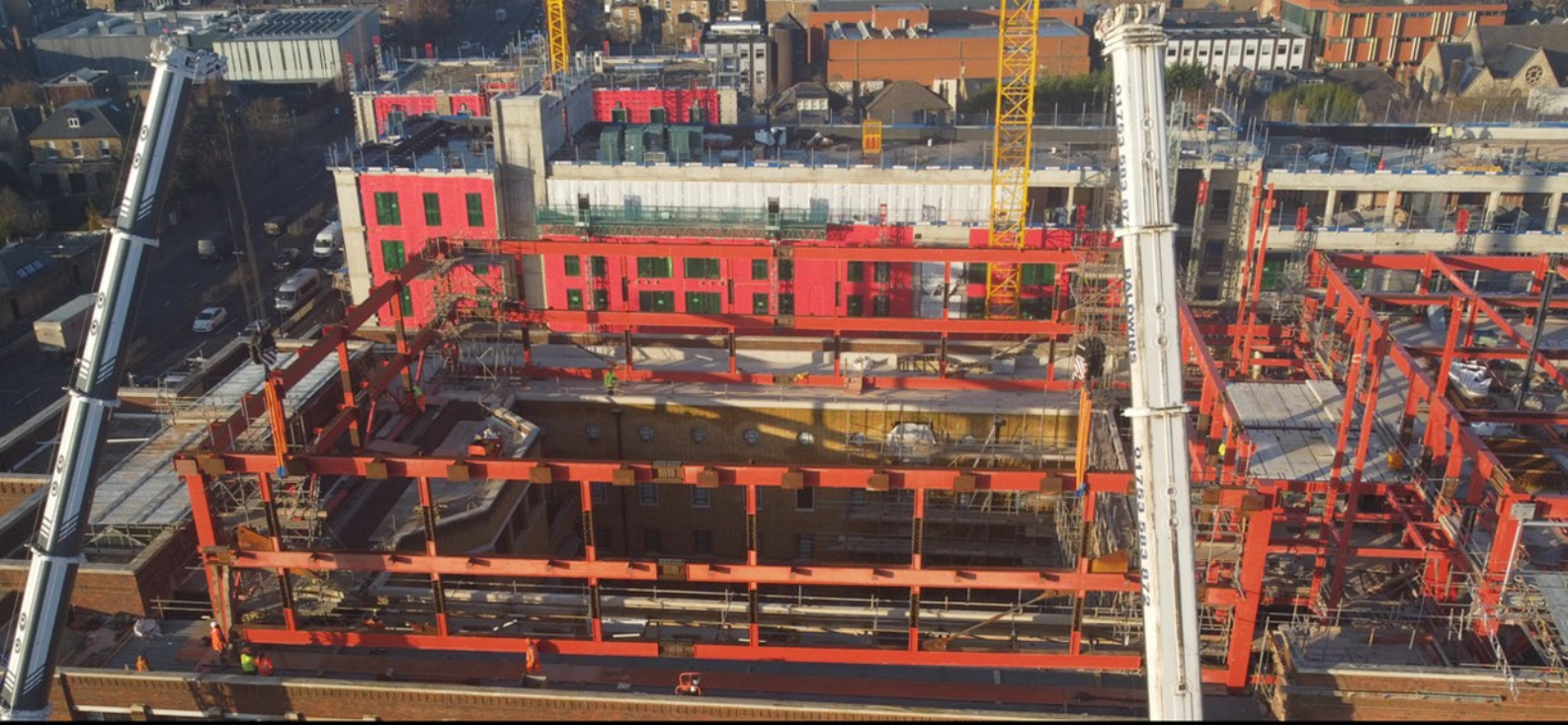
And as we looked upon the West Truss, now securely in place with the 102t tandem lifting operation standing proud in its final position the result of months of detailed planning, numerous workshops between the client and the project management team was delivered in just under 30 minutes with complete poise and control - a textbook lift!

3D CAD EXAMPLES & GALLERY

After several site meetings and a presentation of the proposed lifting operations, an order was secured to produce a full engineering study for each truss. The 3D engineering drawings revealed that the site and positioning of the cranes was even tighter than first expected, with the Y guy beams of the 500-tonne crane only 100mm away from the adjacent building under construction. Despite the challenges, our team's expertise and innovative approach ensured a safe and successful lift for this complex project.







SUMMARY FROM THE MD

When this enquiry was received it was clear DSM was very well placed to deliver this complex lifting operation as we have a great depth of knowledge and expertise within the business.

Our technical manager Marcus O'Dell was tasked with working with the client, the principle contractor and their respective teams to plan the work in a step by step process.

We quickly identified the problem of a very constricted inner city location, interface with ongoing construction activity and a whole manner off immovable objects which had to be taken into account within our plan.

Marcus then began to design the crane concept in two and 3d, he also developed the rigging accessories to be used including designing a bespoke sling saver system fabricated from steel and checked by our in house structural engineer to ensure the lifting tackle remained in perfect condition and worked to its optimal designed specification.

At DSM we pride ourselves in the way we work as a team, there's a strong emphasis on collaboration with our supply chain partners we planned the mobilisation of each individual piece of equipment to be used on site to provide a smooth and efficient delivery process as to not hinder the ongoing activities for the principle contractor who still had to stay on program with the rest of their non lift associated construction site activities.

We managed the whole process for the client in a timely manner with each truss having its own set of method statements and drawings approved without any additional comments or revisions a real "one shot" RAMS approval which is very satisfying considering the complexity and risk associated with the task, and as the trusted and approved lifting contractor for this project, I'm very happy with the outcome.

The trusses were lifted on time without incident or drama we just followed the steps which were pre planned and approved and it was a pleasure working with a fantastic team of professionals who all took the pressure of such a complex and heavy lift in a tight space firmly in their stride.

Further works are planned on the site with Marcus and the team, and we are looking forward to successful completion later this year.

Melvyn Rogers - MD

