

DSM

CONTRACT
LIFTING
SERVICES



**Böcker AK 48
Truck Crane**

TECHNICAL INFORMATION

Böcker AK 48 Truck Crane

The Böcker AK48 is a cutting-edge hybrid mobile crane that blends advanced lifting technology with eco-conscious efficiency. Designed for versatility, power, and precision, it is ideal for construction, roofing, and industrial applications.



With a 52-metre maximum extension and a 6,000kg lifting capacity, the AK48 excels in both high-reach and precision lifting scenarios. Its lightweight aluminum boom ensures exceptional reach while maintaining optimal manoeuvrability. The hybrid drive system seamlessly switches between electric and diesel power, reducing emissions and lowering operational costs.

Key Features

- **Rapid Setup & Efficiency.** Quick deployment saves time on-site.
- **Intuitive Remote Control.** Enhances precision and safety.
- **Advanced Stabilisation** – Secure lifting in varied environments.
- **Compact & Versatile.** Ideal for tight urban spaces and large scale sites.



Unit 42, Shafers Centre, 677 High Rd, South Benfleet, Benfleet SS7 5SF

0203 948 9659

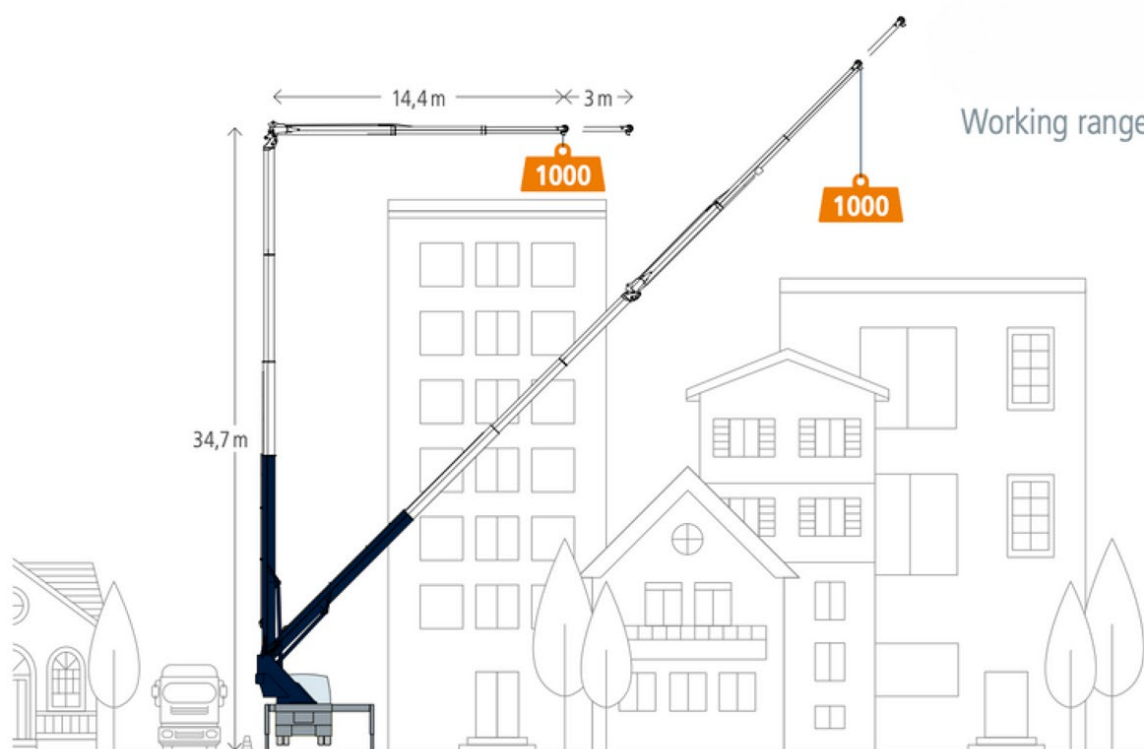
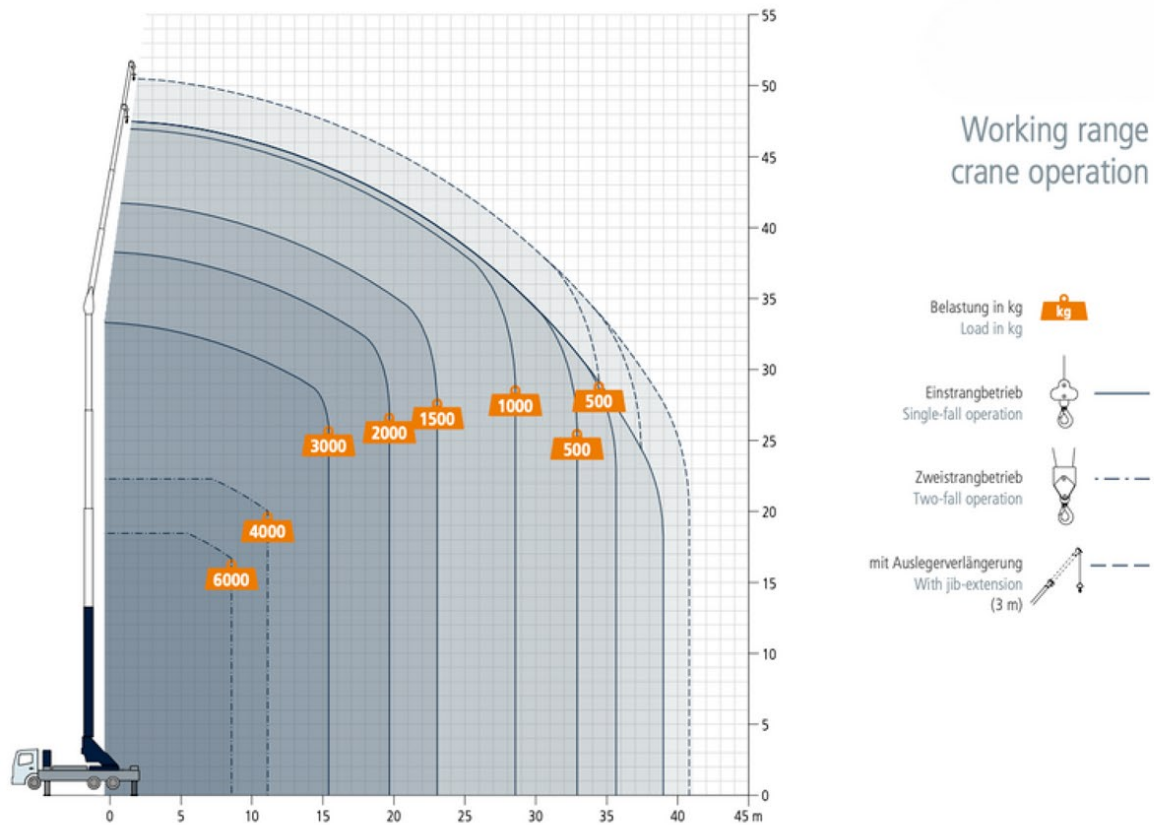
contracts@dsmcls.co.uk

www.dsmcls.co.uk

SPECIFICATIONS

Permissible gross vehicle weight (t)	26 (27)
Transport height (m)	3.99
Transport width (m)	2.55
Transport length (m)	10.89
Width extended on one side max. (m)	4.23
Width extended on both sides max. (m)	6.10
Max. payload (kg)	3,000 (optional 6.000)
Max. extension length (m)	49 (optional 52)
Working height up to jib (m)	34.7
Jib extendable (m)	6.3 / 10.3 / 14.4
Jib payload (kg)	3,000 / 1,500 / 1,000
Boom angle (degrees)	90
Jib angle (degrees)	180
Pivoting range (degrees)	endless
Hook speed (m/min)	60
Range for crane operation at 500 kg (m)	32,8
Range for crane operation at 1 t (m)	28,5
Range for crane operation at 2 t (m)	19,6
Range for crane operation at 3 t (m)	15,4
Range for crane operation at 6 t (m)	8,5
Drive	E-PTO or PTO / 400 V hybrid

SPECIFICATIONS





“

**IT'S CONTRACT
LIFTING, WITH
A PROJECT
APPROACH**

”



Unit 42, Shafers Centre, 677 High Rd, South Benfleet, Benfleet SS7 5SF

0203 948 9659

contracts@dsmcls.co.uk

www.dsmcls.co.uk