

# DSM

CONTRACT  
LIFTING  
SERVICES



**18T Hiab  
WITH FASSI F165A**



# TECHNICAL INFORMATION

## 18 Tonne Hiab with Fassi F165A



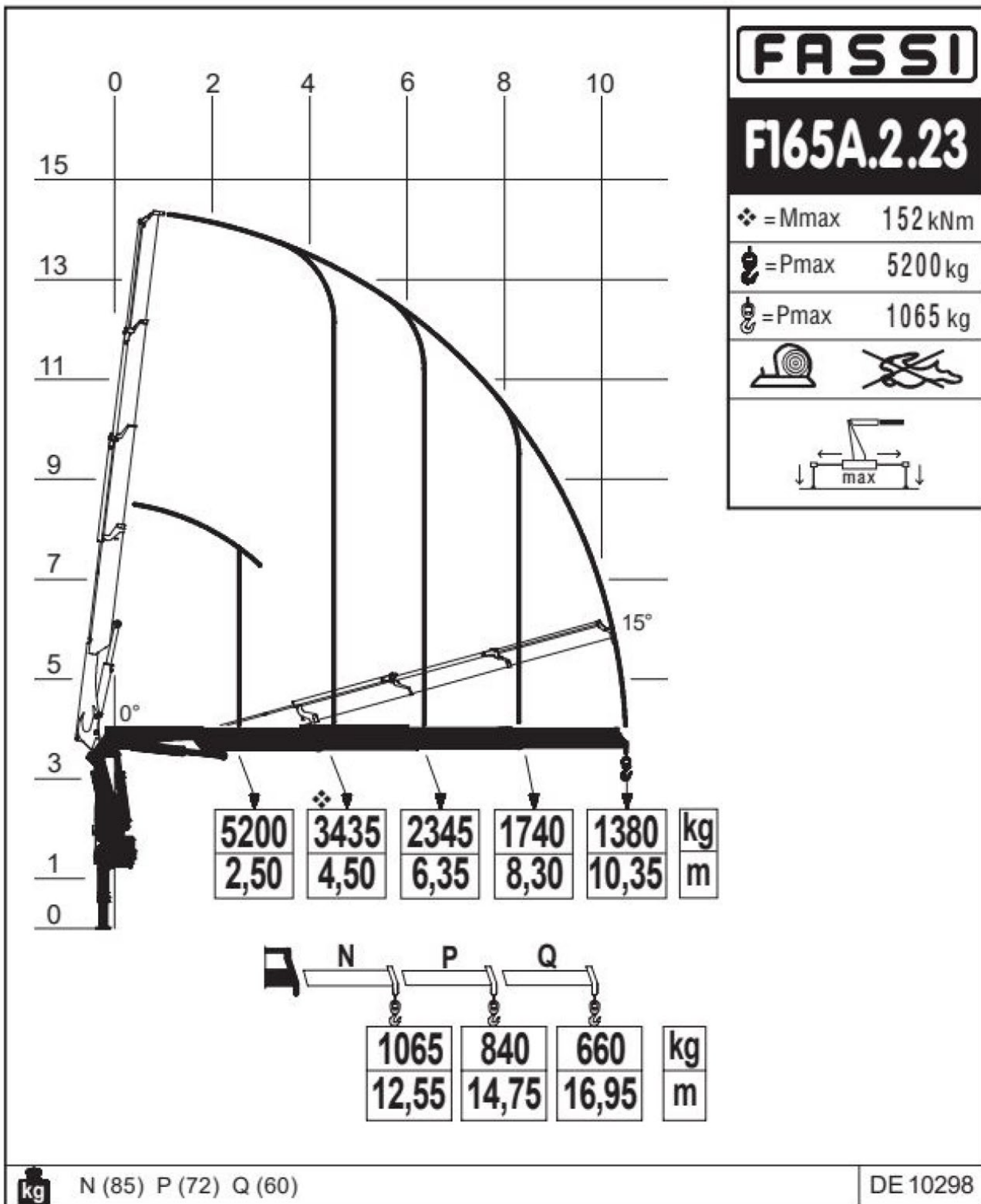
Beyond its sheer lifting power, the 18T truck shines in maneuverability, effortlessly navigating tight spaces and adapting to challenging work environments. Whether it's the precise placement of heavy equipment or the efficient loading and unloading of materials, this truck stands out as a reliable and adaptable solution.

Introducing the 18-Tonne Volvo 4x2 flatbed, a powerhouse engineered for heavy lifting and versatile transportation needs. This formidable truck is equipped with a Fassi F165A.2.23 crane and a L512 Flyjib, delivering exceptional performance with a robust 16-tonne lifting capacity. The crane's 360° motion is further complemented by carefully specified additional outriggers, ensuring stability in any operational scenario.

The lorry bed, enhanced by a manual extension bar, commonly referred to as the "Greedy bar," significantly extends the truck's load-carrying capabilities in terms of length, along with a bearing weight of 6.1-tonnes.

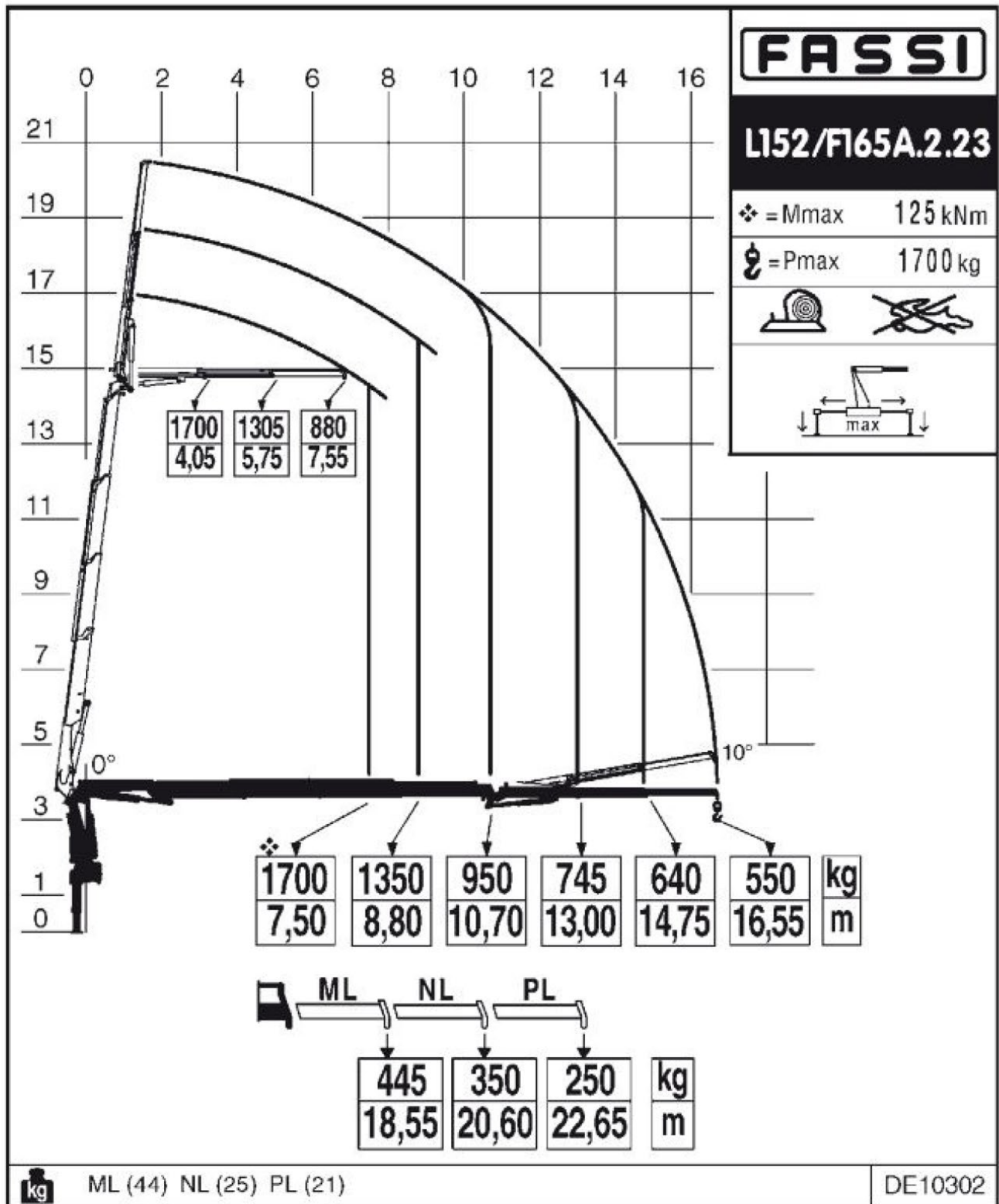


# SPECIFICATIONS

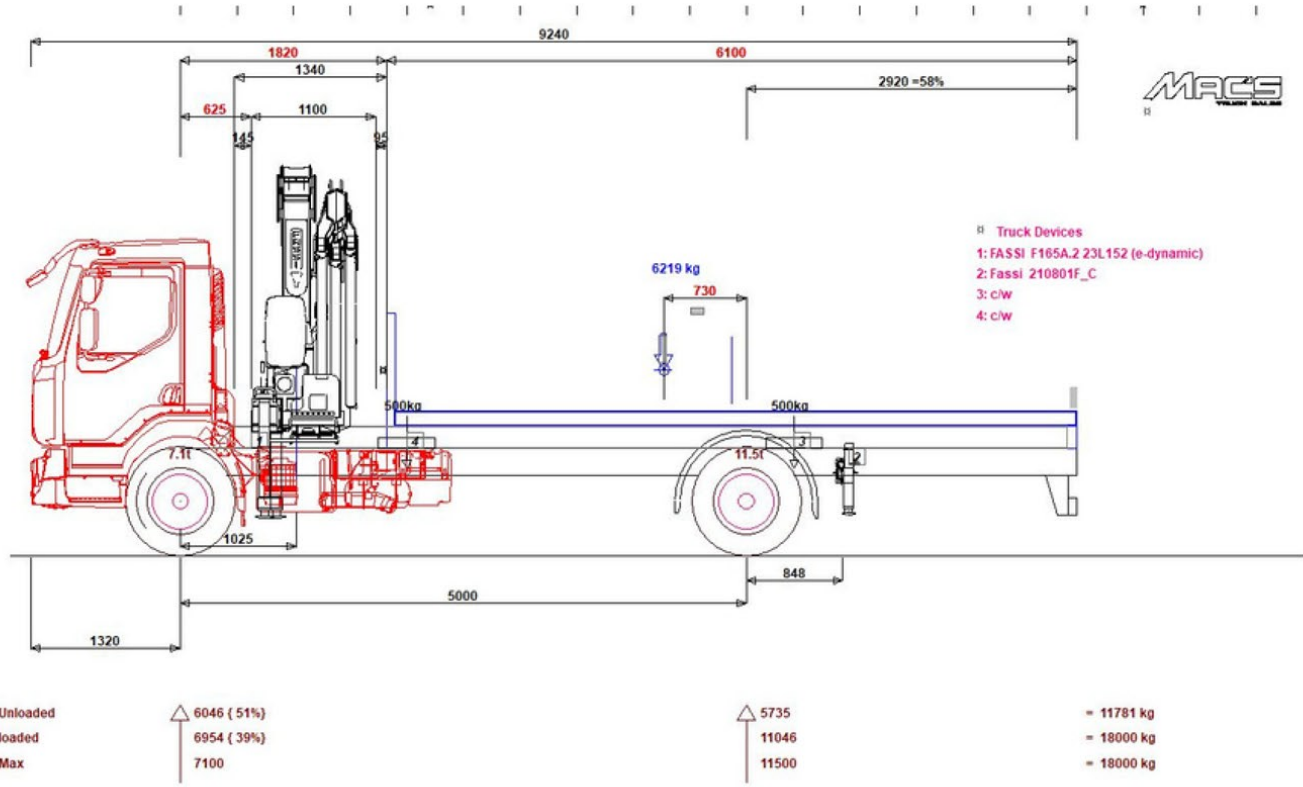




# SPECIFICATIONS



# SPECIFICATIONS







“

**IT'S CONTRACT  
LIFTING, WITH  
A PROJECT  
APPROACH**

”



**The Old Rectory, Church Road, Bowers Gifford, Basildon. SS13 2HG**

0203 948 9659

[contracts@dsmcls.co.uk](mailto:contracts@dsmcls.co.uk)

[www.dsmcls.com](http://www.dsmcls.com)