



**CONTRACT
LIFTING
SERVICES**

LIEBHERR LTM 1060

60 TONNE ALL TERRAIN CRANE

Powerful. Precise. Professional.

The Liebherr LTM 1060 is a versatile 60-tonne all terrain crane, combining excellent lifting performance with compact dimensions and outstanding manoeuvrability.

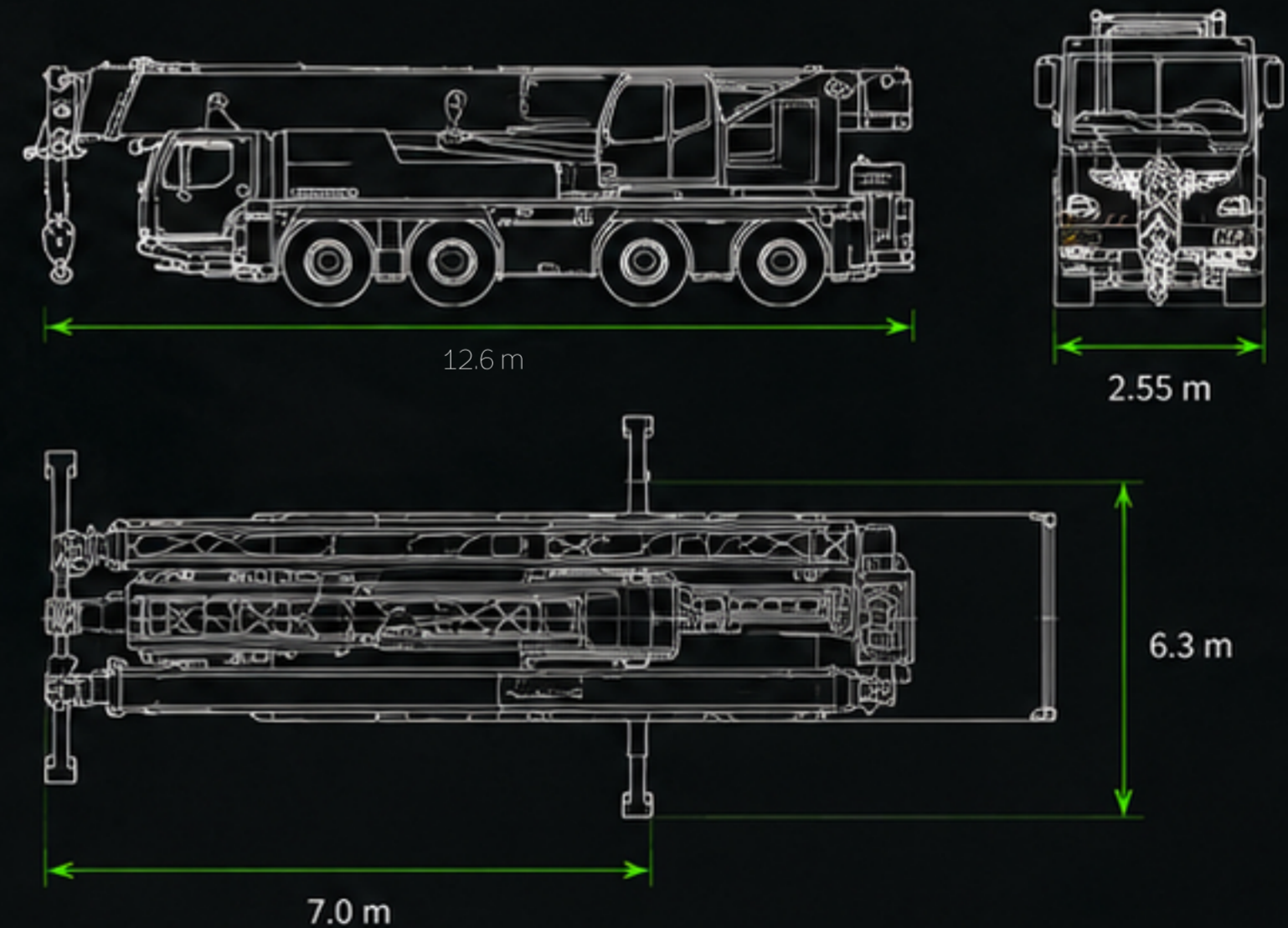


KEY FEATURES

-  **60 Tonne**
Maximum Lifting Capacity
-  **48m Main Boom**
Telescopic
-  **16m – 10.8m**
Single Fold Swingaway Jib
-  **360°**
Full Slew
-  **6 x 6 x 6**
Drive
-  **Compact Dimensions**
Outstanding Manoeuvrability

TECHNICAL SPECIFICATION

Maximum Lifting Capacity	60,000 kg
Maximum Boom Length	48.0 m
Maximum Tip Height	61.0 m
Maximum Radius	40.0 m
Jib Length	16.0 m – 10.8 m
Engine Power	300 kW
Drive / Steering	6 x 6 x 6
Overall Length	13.0 m
Overall Width	2.55 m
Overall Height	3.96 m
Total Weight	36,000 kg



SAFE. RELIABLE. PROFESSIONAL.

Trusted lifting solutions across the South East.



BUILT FOR PERFORMANCE.

DELIVERING LIFTING SOLUTIONS
YOU CAN COUNT ON.



contracts@dsmcls.co.uk



www.dsmcls.co.uk